



THE NICK WILLIAMS POOL DESIGN PROCESS

Many of the pools that will be presented use The Nick Williams Pool Design Process, a new method developed by Nick that harmonizes very well with Pebble Tec finishing. “Pebble Tec”® is a brand name pool finish—the original pebble pool finish, where sides and bottom surfaces of the pool are finished with pebbles or small stones. The process delivers more natural elegance while retaining durability that combines beauty with exceptional value. Available in 18 plus attractive colors, a Pebble Tec pool interior is the perfect choice for individuals desiring a more natural look for their pools, spas, or water features.

Nick Williams has added his own process, his own flair, to the standard Pebble Tec design. In this process he mixes different types of stone with concrete, in various sizes, to create diverse surface textures, sometimes to simulate a shoreline, where some larger stones or small boulders will be added in, or on other occasions to simulate a stream bed or forest pond. The color chosen is designed to blend with the desired theme perfectly, making the finished Pebble Tec format look more natural in any setting it is adapted to.

Sometimes a shelving design staircases from the shallow to deeper ends of the pool, and these tiers are styled with more natural stone to create a number of effects. In designing these areas, Nick also considers how light interacts with the water, to create the illusion of deep depths in certain areas of the pool, even though the physical depth maybe somewhat shallow. The contrast of color in the stone used can easily create this visual effect, with lighter colored flagstone embedded with smaller pebbles and stones on one tier, and the level just beneath it in a cooler, darker Pebble Tec finish. The transition from light warm stone to darker, cooler colors creates the illusion of depth.

Particular attention is paid to areas that will have some inflowing water, such as a natural waterfall design or fountain. Often in corner areas, these design see the inclusion of much larger boulders to round off the area and make it appear more natural. Often artistically crafted faux boulders will be combined with Nature's own.

Working back away from the pool with beds of gravel, water plants and other scatters of mixed stone and pebble make the whole scene look completely natural, as if this pristine pond was there all along, and the home was simply built around it! This type of styling is also ideal for offsetting a spa adjacent to the main pool, and serves to create a seamless blending of the two water features.

Nick often uses a “shoreline” idea, adding in some stone work that appeared to have tumbled from the edge of the pool to its new resting place in the design.









THE NICK WILLIAMS POOL DESIGN PROCESS: POOL 2

BEFORE



AFTER



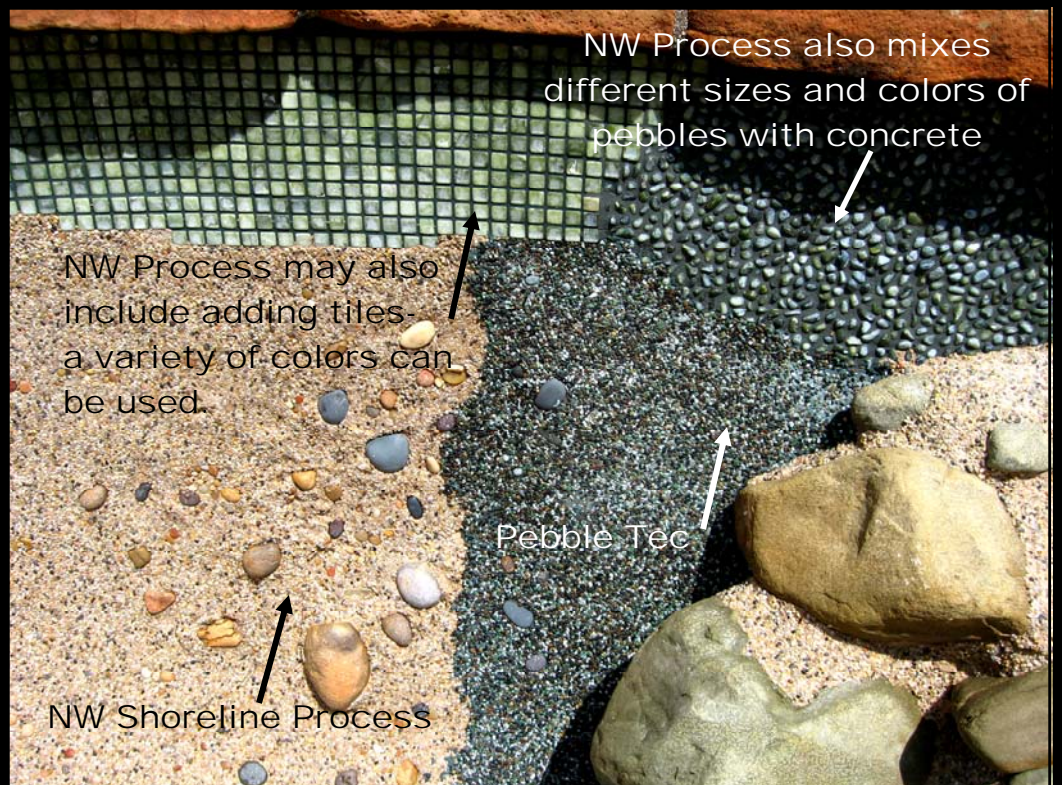
Watch for more on
this pool
in upcoming
article
"Outrageous Pools
Part 2"



BEFORE



AFTER

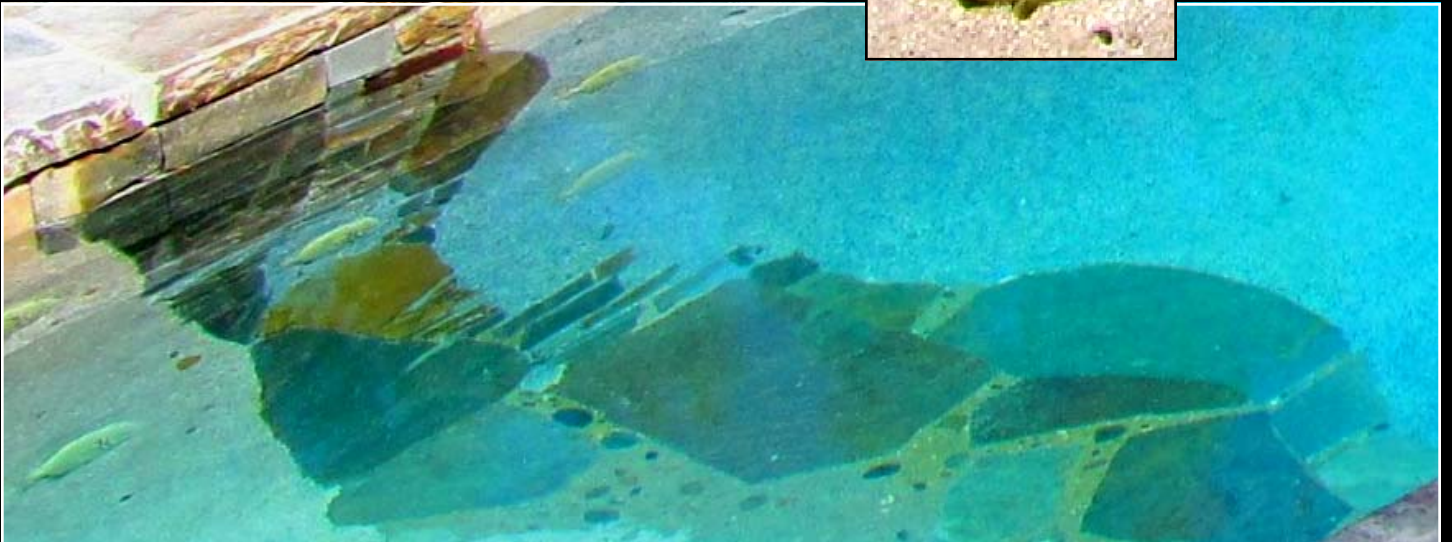


Above- NW Shoreline plus various sized rocks & boulders

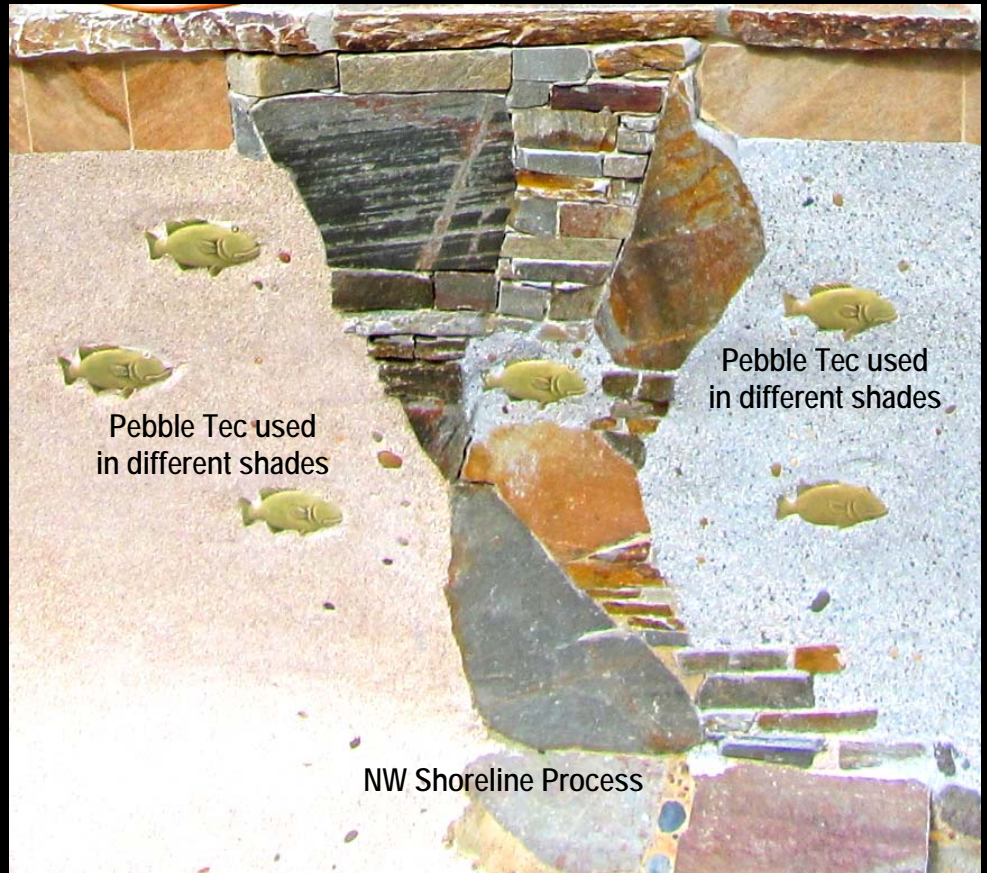




THE NICK WILLIAMS POOL DESIGN PROCESS: POOL 3



More about this Pool to come in the upcoming article
"A Day in the Field with Nick"



Adding to certain areas of the pool

- beautiful fish designs
- different shades of Pebble Tec
- flagstone and other materials
- for different surface textures

